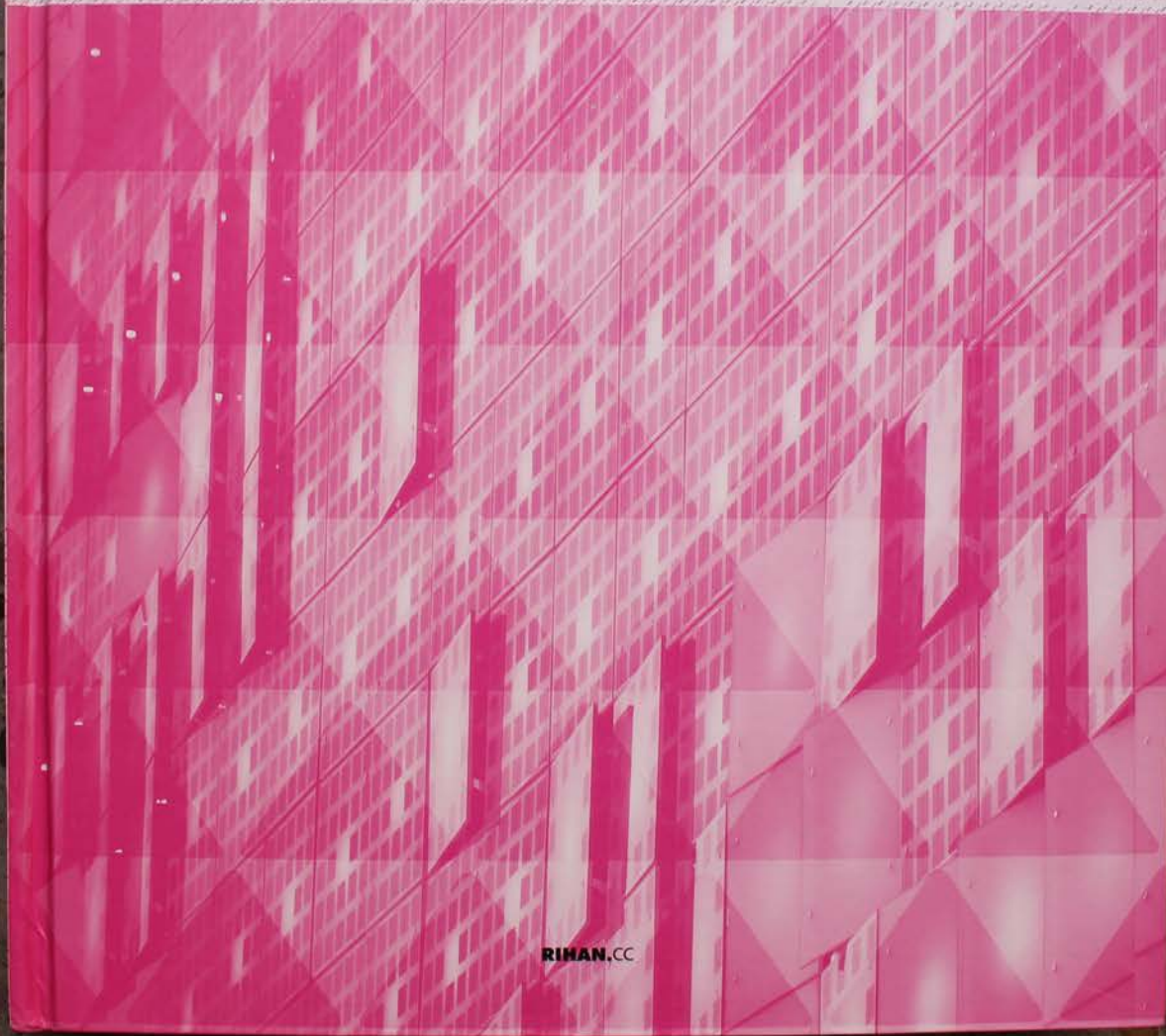


A-Z III VOL.1

ARCHITECTURE ZONE
RIHAN.CC H.K. RIHAN INT'L CULTURE SPREAD LIMITED



RIHAN.CC

Symbiosis of an office building and a landscape garden

Considering the urban anchoring of the site, the angles of this building block are the regulating elements. The VDAB-project anchors itself with the existing context on the corner of the Noordlaan-Drie Koningenstraat, which is in direct relation with various public functions (post, ministry of finances), located near the main road. It is an intuitive meeting point located on a wide footpath. The second angle is the location for a possible extension and is at present, included in the project's garden.

Concerning the implementation of the building, the volume is entirely concentrated on the street side. This offers several advantages in the field of compactness, economy and energy assessment, acoustic comfort for the offices on the garden side, large distances to the neighbouring houses and avoids fragmentation of the open green space. For the acoustic comfort on the street side, patios were added. As a result, a simple image of the emplacement between the built and green space appears.

Because of the excavating cost the lightly polluted soil, the actual volume to be removed is minimised by mooring the parking into a slope. The remaining volume of soil extracted is used to form a landscaped garden and is naturally purified by the use of foremediating plants. The open and slightly sloped car park, offers thus, a pleasant solution that is naturally lit and ventilated, with clear views on the garden and other open spaces. Furthermore, the principal interior distribution passage way of the building, runs from the ground level to the first floor along a slope that is parallel to the parking space; This walkway links the public spaces on the ground floor in a natural and spatial manner with semi-public spaces on the higher levels.

Circulation, access

As described above, the angle on Noordlaan and Driekoningenstraat is a natural anchor point for the site. It is thus obvious to locate the main entry and reception desk at this point. This desk is laterally backdropped, so that the street appears to be literally drawn into the building, where a bike stall for visitors is also installed.

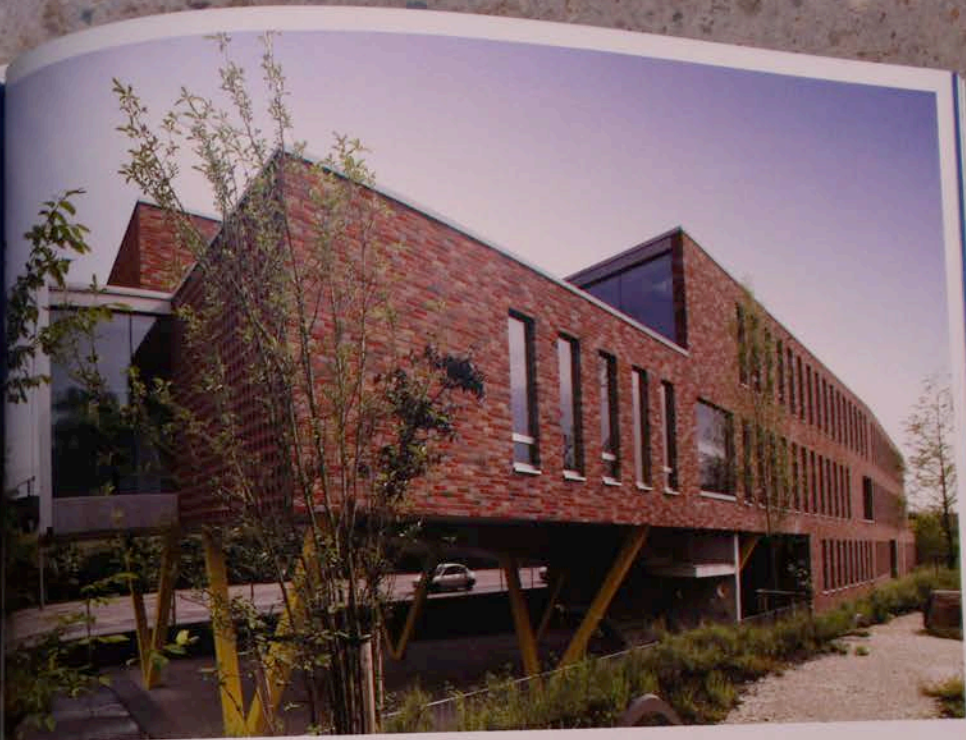
This corner is on the other hand not appropriate for the access of cars and bicycles of the staff. This access is situated to the long end of the building. The staff parking space is situated under the building, with the bicycle stall next to the vertical circulation; the visitor's car park is located at the beginning of the slope, and identified by grass files.

The visitors can enter the facility, from their parking spot, either from the street or from the garden side directly to the lobby. The staff members can reach the lobby or their offices by the means of the internal staircase or directly from the garden.

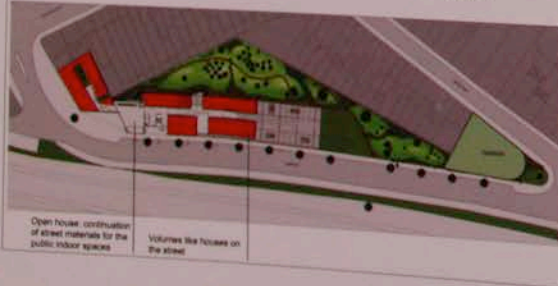
Open house, privacy, transparency, recognition, charisma, communication

The project's developed configuration has been based on the communicative and open character of the building. The fluidity between inside-outside is highlighted in the reception desk zone of the main lobby by the gradation: "outside" — covered outside space — "inside" and generates openness between the street, the lobby and the garden. Locating the common functions on the upper floor, above the reception, reinforces this notion of openness. By the specific organisation of the services, the transverse openings in the circulation area, and by the slope solution of the main distribution, various panoramic views are created. Along with the area where the garden is in contact with the street, all these elements form the base for the open character and the "embracing image" of the design that can be symbolised by the built branch and the green branch embracing each other.





D - OPEN HOUSE, transparency, recognition, charisma, communication



B - IMPLEMENTATION IN THE URBAN BUILDING BLOCK

	+	-
<p>offensive volume</p>	<ul style="list-style-type: none"> • transparency • charisma • cantilevered office towards the garden • cantilevered office towards the street • cantilevered office towards the garden • addition to housing • no fragmentation of the garden 	<ul style="list-style-type: none"> • cantilevered office towards the street and towards the garden
<p>intervening in garden</p>	<ul style="list-style-type: none"> • volumes of office towards garden 	<ul style="list-style-type: none"> • intervention • volume • addition to housing • fragmentation of the garden
<p>intensive volume</p>	<ul style="list-style-type: none"> • transparency • charisma • cantilevered office towards the garden • cantilevered office towards the street • cantilevered office towards the garden • addition to housing • no fragmentation of the garden 	





096



097

